

Surfbird Habitat Use in Interior Alaska

Sam Simon

University of Alaska Fairbanks



Photo: Addie Willsrud

Surfbirds (*Calidris virgata*) in the Steese NCA



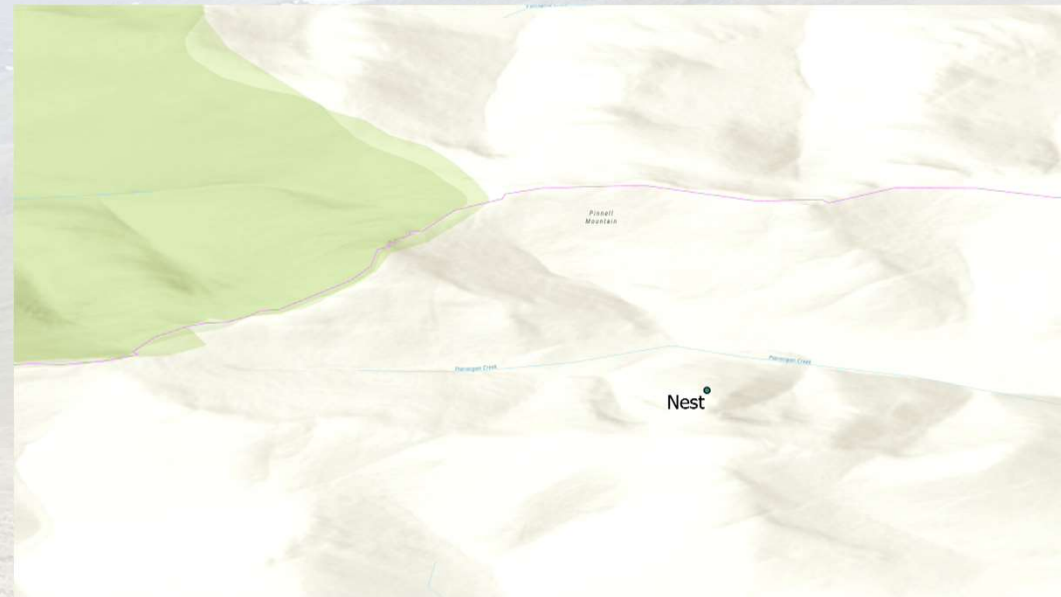
Objectives

- Resource Selection Function for the Steese NCA
- Create a detailed distribution map for Alaska
- Contribute data to migratory connectivity study



Anatomy of an RSF

- Animal *use points*
- Generate random *control points*
- Overlay *vegetation data*

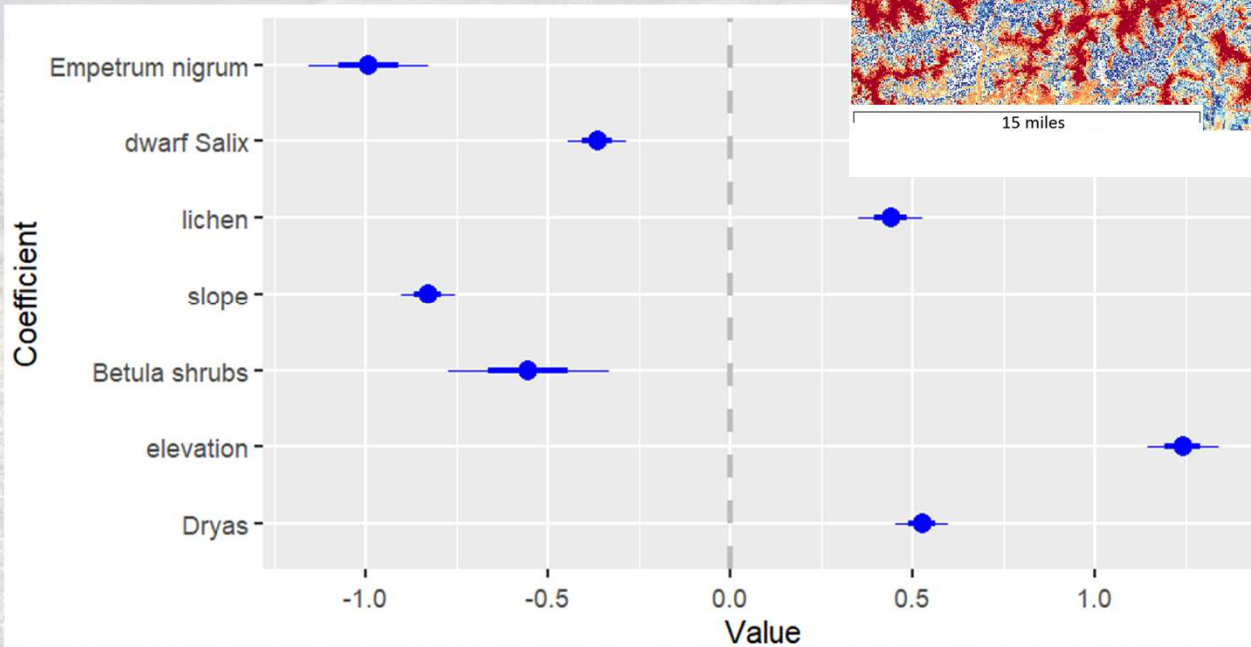
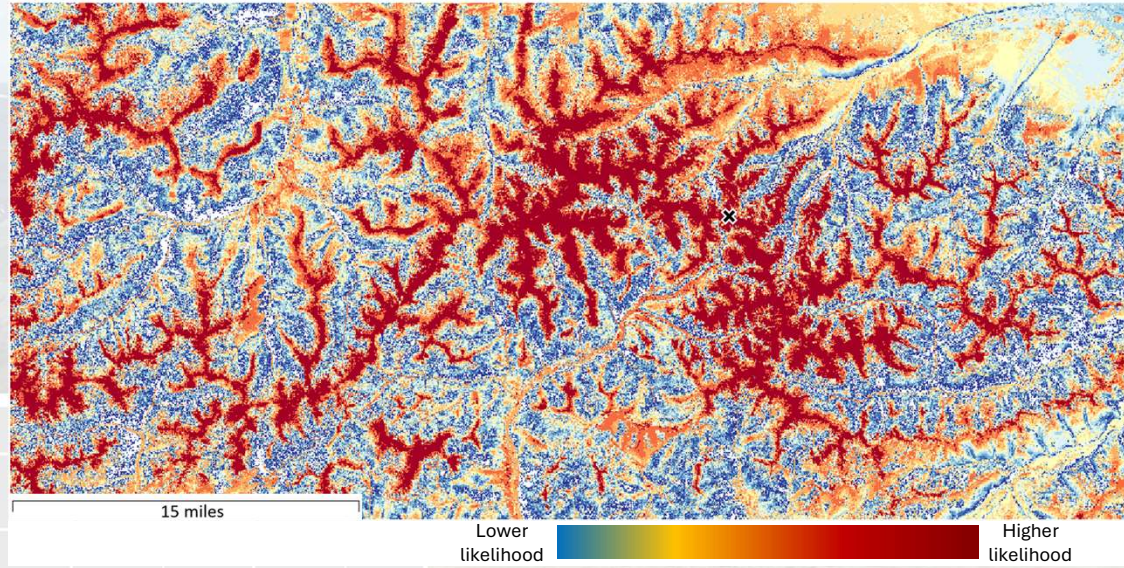


Continuous Foliar Cover of Plant Species and Aggregates in North American Beringia

Vegetation

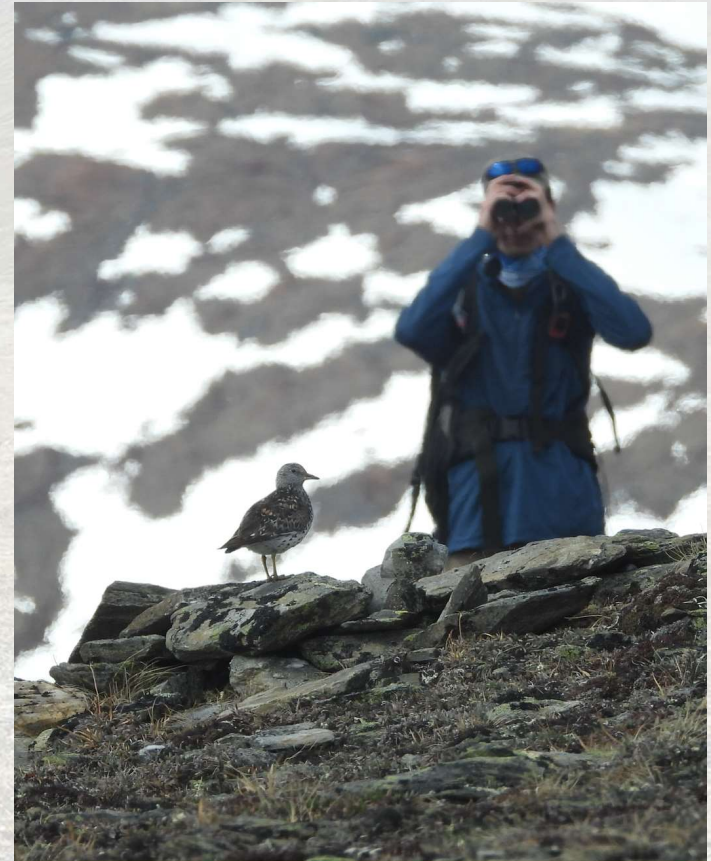


RSF results

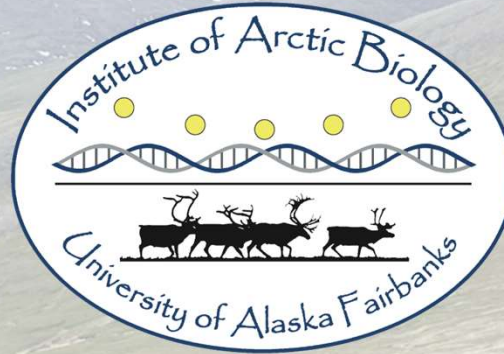


Next steps

- Informing the BLM management plan
- Statewide distribution map
- A tool for future use



Acknowledgements



Phillip Andrews Memorial Award Ted McHenry Biology Field Research Fund
Angus Gavin Migratory Bird Research Grant

Questions?

