

# Surfbird Habitat Use in the Steese NCA

---

Sam Simon

University of Alaska Fairbanks



# Sense of Place: Steese Area

- Eastern Interior (BCR 4)
  - Yukon-Tanana Uplands
- Dome topography
- Tundra from 3000-4700 ft



Photo: Addie Willsrud

# Surfbird (*Calidris virgata*)



# Objectives

- Resource Selection Function for the Steese
  - GPS data from 2024 and 2025
  - Ground-truth preliminary model with surveys in 2025
- Create a detailed distribution map for Alaska
- Contribute data to migratory connectivity study



# Habitat Insights

- Continuous foliar cover layer from Alaska Center for Conservation Science

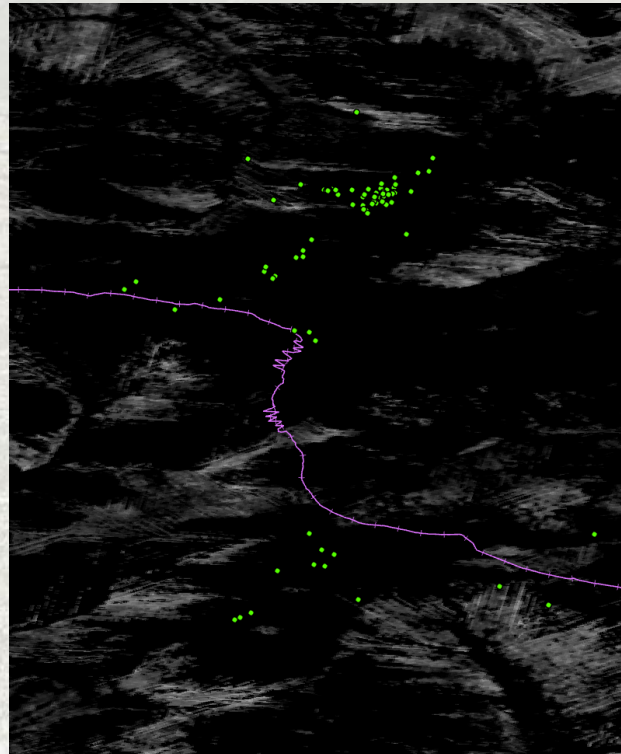
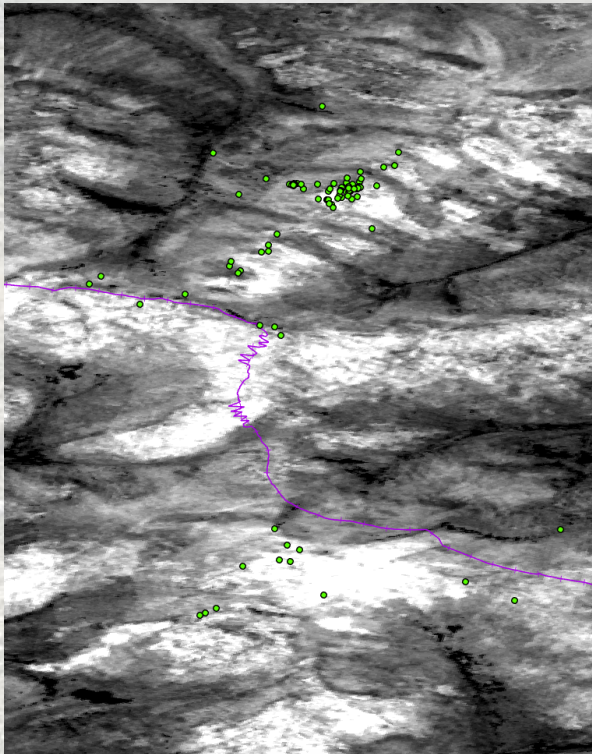


Photo: Addie Willstrod

# Bigger picture

- Bureau of Land Management
  - Strategic Science Plan for the Steese
- Recreation Planning



# Fieldwork

- Noose lines
- Shorebird herding...



Photo: Addie Willsrud



Photo: Ben Simmons



Photo: Addie Willsrud



Photo: Addie Willsrud

# Transmitters

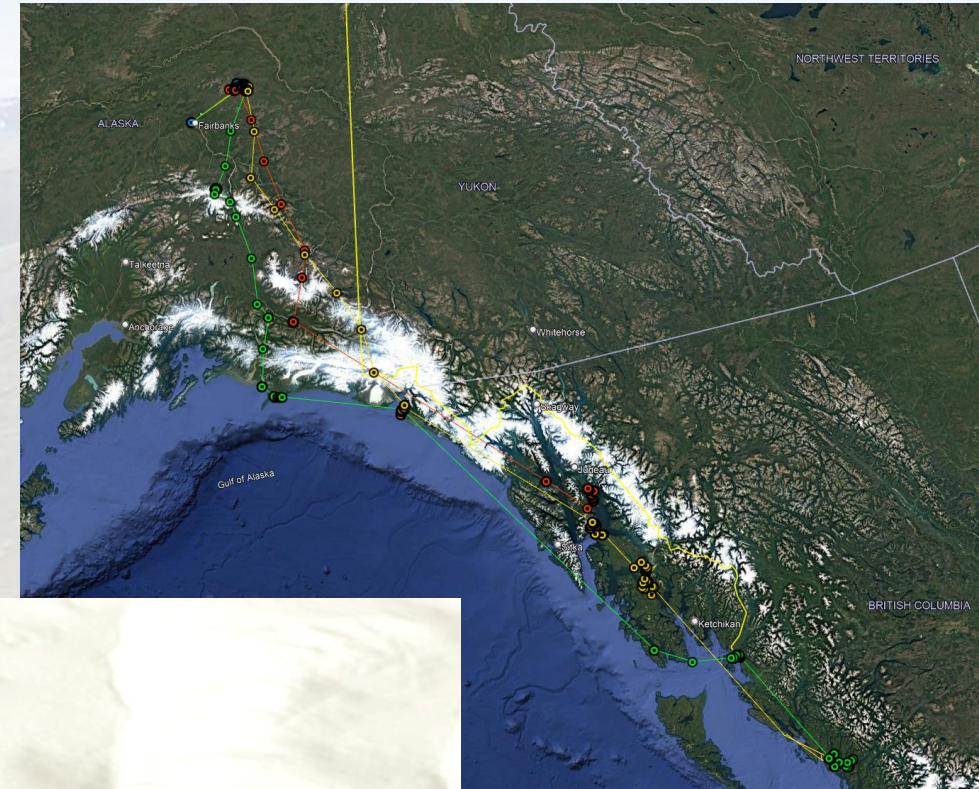
- Lotek
  - Argos Solar PinPoint XS (5.5g)
  - Sunbird (2g)
- Leg loop harness



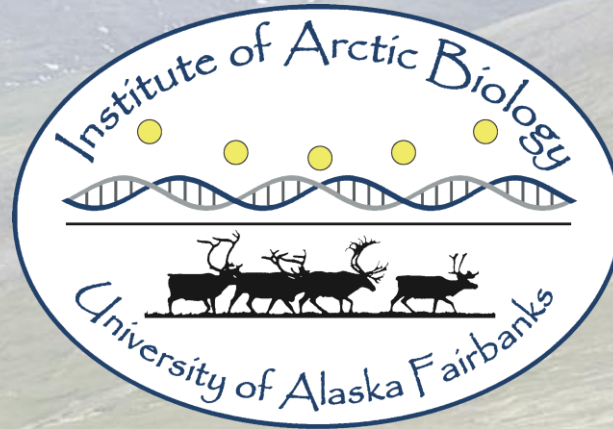


# Through the Seasons

- Breeding: 16 fixes/day
- Migration: 8 fixes/day
- Nonbreeding: 2-3 fixes/day



# Acknowledgements



Phillip Andrews Memorial Award

Questions?

